

# PULP & PAPER STATISTICS

## Fourth quarter and total 2009

## **General Comments**

### **Comparison with January – December 2008**

The total production of market pulp decreased with 9 percent and amounted to 3.7 million tonnes for 2009. Production of chemical pulp decreased by 7 percent and reached 3.4 million tonnes. During last year two pulp mills were closed, and there were also changes from market to integrated pulp, this affects the comparison with the figures of last year.

Exports of market pulp reached the same level as 2008, 3.4 million tonnes, while domestic deliveries fell by 13 percent and amounted to 557 000 tonnes for 2009. Exports of Chemical pulp rose by 3 percent to 3.1 million tonnes. Chemical pulp deliveries to the EU decreased by 9 percent to 2.4 million tonnes, exports to Asia increased during 2009 and reached 579 000 tonnes. The deliveries to China rose by 146 000 tonnes and are now 251 000 tonnes for 2009. Exports to other regions also showed rising figures during 2009.

Paper production for 2009 was 10.9 million tonnes, a fall by 6 percent compared to last year's figures. For Tissue and Wrapping papers, the segments rose by 2 and 8 percent respectively, while the other segments decreased compared to last year figures. Paper mill closures during the past year have influenced production and delivery figures.

Exports went down by 5 percent and amounted to 9.7 million tonnes and domestic deliveries fell by 8 percent to 1.2 million tonnes. Export to the EU decreased by 7 percent and reached 6.9 million tonnes while deliveries to Asia rose by 13 percent and exports to China increased by 100 000 tonnes to 285 000 tonnes.

### **Comparison with 3<sup>rd</sup> quarter 2009**

The total production of market pulp compared to the previous quarter fell by 1 percent, and production of chemical pulp went down by 2 percent to 841 000 tonnes. Exports of all market pulp went down by 9 percent compared to the third quarter 2009. The exports of chemical pulp fell by 9 percent. Exports to the EU fell with 4 percent, while deliveries to Asia continued to decrease during the fourth quarter.

The fourth quarter's paper production rose by 2 percent compared to the previous quarter and amounted to 2.8 million tonnes. The exports reached 2.5 million tonnes for the fourth quarter unchanged compared to the last quarter, while domestic deliveries rose to 316 000 tonnes. Exports to Asia amounted to 341 000 tonnes during the actual quarter, a decrease by 11 percent compared to the third quarter 2009.

For more information please contact Katrin Heinsoo (+46 8 762 72 42)  
Email: [katrin.heinsoo@forestindustries.se](mailto:katrin.heinsoo@forestindustries.se)

## Market pulp

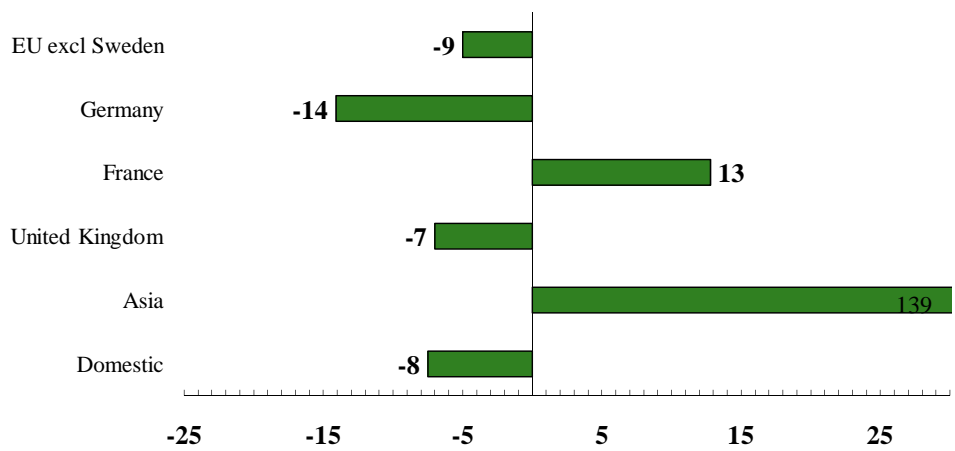
December 2009

| <b>PRODUCTION</b><br>1000 tonnes                      | <b>Q4</b><br><b>2009</b> | Q4<br>2008        | Change<br>% | <b>Acc</b><br><b>2009</b> | Acc<br>2008        | Change<br>% |
|---|--------------------------|-------------------|-------------|---------------------------|--------------------|-------------|
| <b>TOTAL</b>  | <b>926</b>               | 940               | -1.4        | <b>3 740</b>              | 4 100              | -8.8        |
| of which  |                          |                   |             |                           |                    |             |
| Mechanical pulp                                       | <b>85</b>                | 82                | 3.6         | <b>344</b>                | 455                | -24.4       |
| Chemical pulp   | <b>841</b>               | 857               | -1.9        | <b>3 396</b>              | 3 645              | -6.8        |
| <b>EXPORTS</b><br>1000 tonnes                         | <b>Q4</b><br><b>2009</b> | Q4<br><b>2008</b> | Change<br>% | <b>Acc</b><br><b>2009</b> | Acc<br><b>2008</b> | Change<br>% |
| <b>TOTAL</b>  | <b>805</b>               | 775               | 3.8         | <b>3 401</b>              | 3 381              | 0.6         |
| of which  |                          |                   |             |                           |                    |             |
| Mechanical pulp                                       | <b>66</b>                | 66                | 0.6         | <b>287</b>                | 370                | -22.4       |
| Chemical pulp   | <b>739</b>               | 709               | 4.1         | <b>3 114</b>              | 3 011              | 3.4         |
| <b>DELIVERIES OF<br/>CHEMICAL PULP</b><br>1000 tonnes | <b>Q4</b><br><b>2009</b> | Q4<br>2008        | Change<br>% | <b>Acc</b><br><b>2009</b> | Acc<br>2008        | Change<br>% |
| EU excl. Nordic countries                             | <b>561</b>               | 529               | 6.0         | <b>2 204</b>              | 2 319              | -5.0        |
| of which  |                          |                   |             |                           |                    |             |
| Germany   | <b>209</b>               | 206               | 1.5         | <b>813</b>                | 947                | -14.1       |
| France  | <b>79</b>                | 60                | 31.7        | <b>290</b>                | 257                | 12.8        |
| Italy   | <b>60</b>                | 59                | 1.7         | <b>246</b>                | 237                | 3.8         |
| United Kingdom  | <b>42</b>                | 34                | 23.5        | <b>160</b>                | 172                | -7.0        |
| Finland+Norway  | <b>26</b>                | 20                | 30.0        | <b>93</b>                 | 84                 | 10.7        |
| Other Europe  | <b>32</b>                | 41                | -22.0       | <b>162</b>                | 157                | 3.2         |
| Asia  | <b>99</b>                | 100               | -1.0        | <b>579</b>                | 381                | 52.0        |
| of which  |                          |                   |             |                           |                    |             |
| China   | <b>32</b>                | 42                | -23.8       | <b>251</b>                | 105                | 139.0       |
| Thailand  | <b>13</b>                | 8                 | 62.5        | <b>53</b>                 | 55                 | -3.6        |
| Indonesia   | <b>16</b>                | 17                | -5.9        | <b>97</b>                 | 69                 | 40.6        |
| Japan   | <b>5</b>                 | 6                 | -16.7       | <b>18</b>                 | 28                 | -35.7       |
| Indien  | <b>14</b>                | 9                 | 55.6        | <b>48</b>                 | 42                 | 14.3        |
| North America   | <b>8</b>                 | 7                 | 14.3        | <b>29</b>                 | 26                 | 11.5        |
| Other countries                                       | <b>12</b>                | 12                | 0.0         | <b>47</b>                 | 44                 | 6.8         |
| <b>TOTAL EXPORTS</b>                                  | <b>739</b>               | 709               | 4.2         | <b>3 114</b>              | 3 011              | 3.4         |
| Domestic  | <b>123</b>               | 135               | -8.9        | <b>496</b>                | 536                | -7.5        |
| <b>TOTAL DELIVERIES</b>                               | <b>862</b>               | 844               | 2.1         | <b>3 610</b>              | 3 547              | 1.8         |

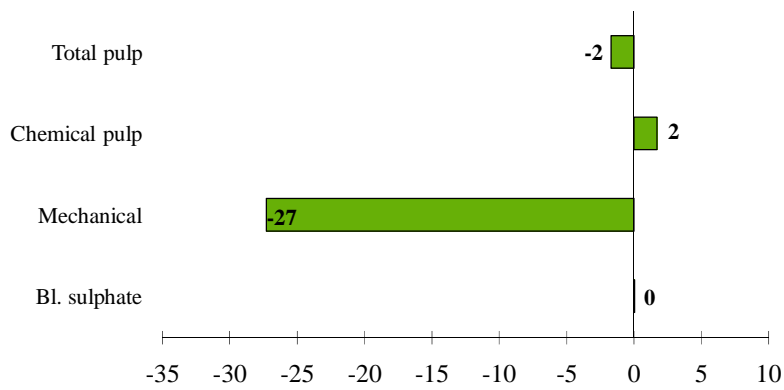
### Production of chemical pulp 2007-2009



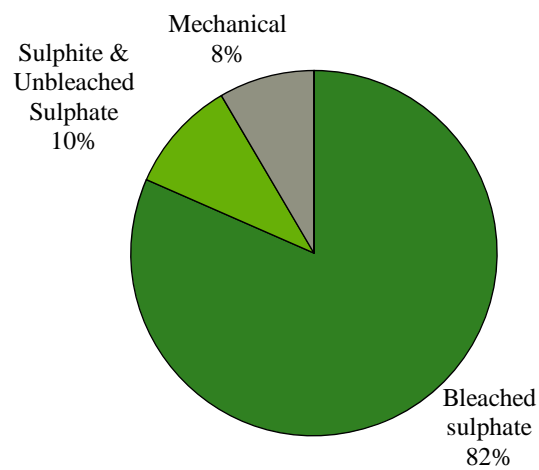
### Chemical pulp deliveries by destination change in percent 09/08



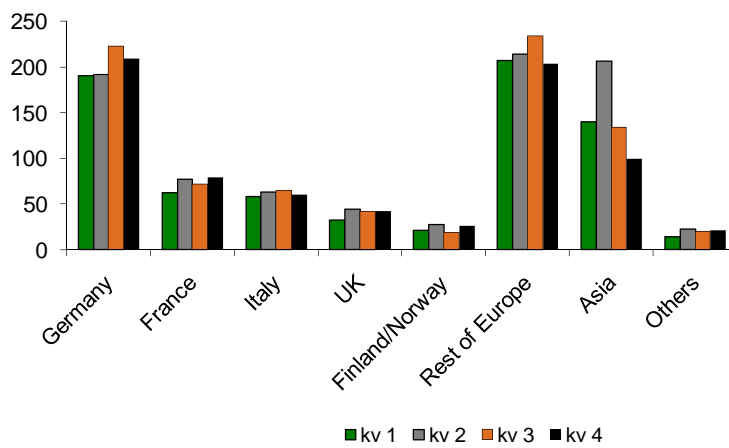
**Pulp deliveries by grade  
change in percent 09/08**



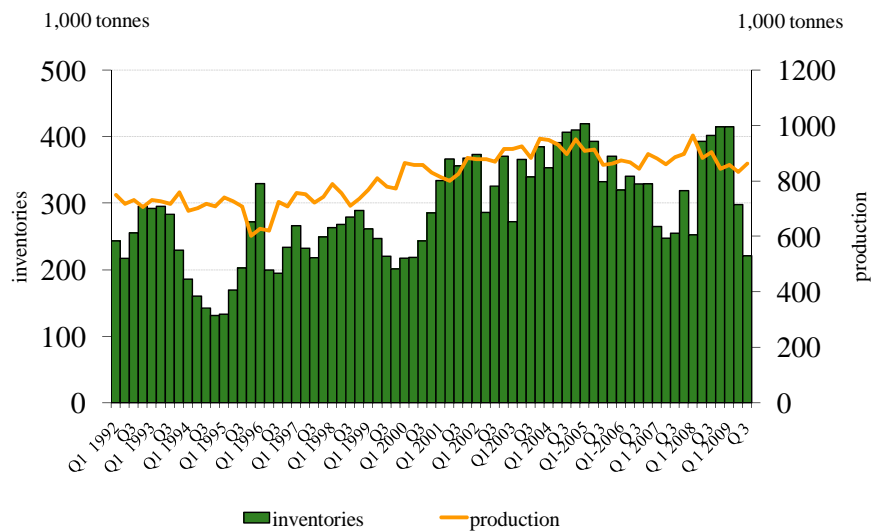
**Exports of pulp  
January – December 2009**



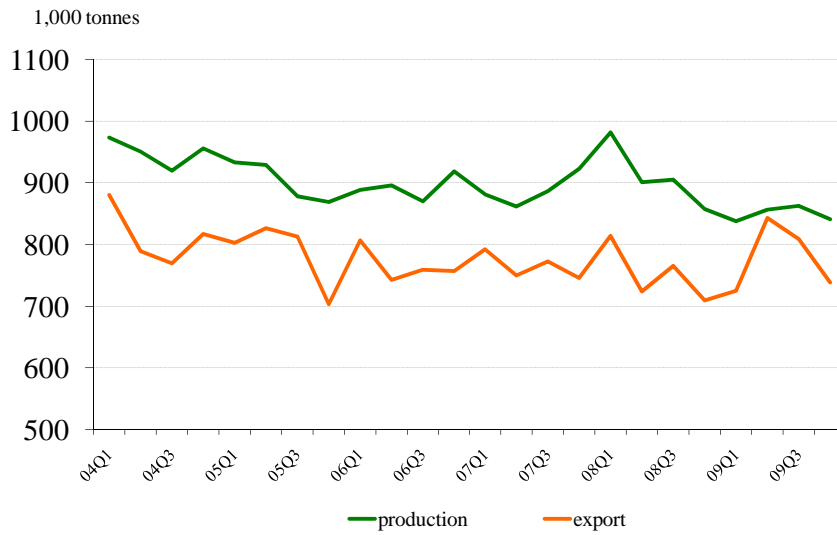
### Exports of chemical pulp 2009



### Inventories and production of chemical pulp 1992-2009



### Production and exports of chemical pulp quarterly 2004 - 2009



**Paper and Board**
**December 2009**

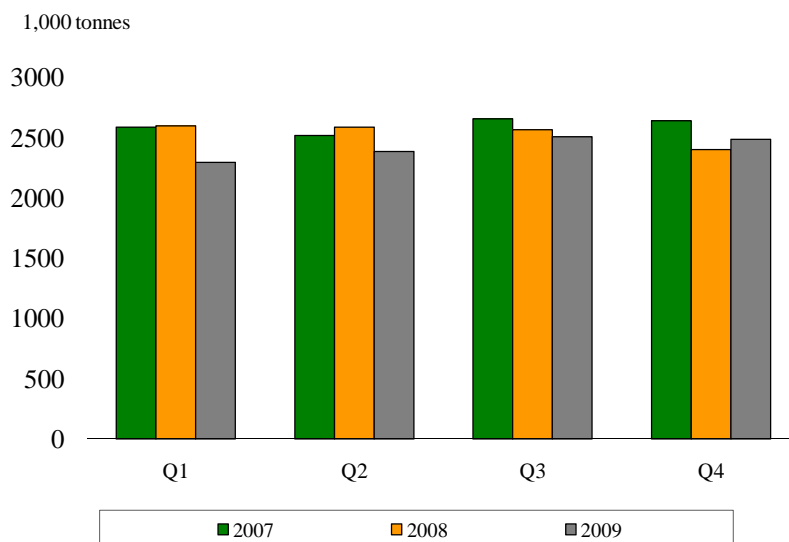
| <b>Production</b>                 | <b>2009</b>  | <b>2008</b>  | <b>Change in</b> | <b>2009</b>   | <b>2008</b>   | <b>Change in</b> |
|-----------------------------------|--------------|--------------|------------------|---------------|---------------|------------------|
| 1,000 tonnes                      | <b>Q4</b>    | <b>Q4</b>    | <b>%</b>         | <b>Acc</b>    | <b>Acc</b>    | <b>%</b>         |
| Newsprint                         | 637          | 644          | -1.1             | 2 405         | 2 560         | -6.1             |
| Woodfree printing & writing       | 323          | 305          | 6.2              | 1 273         | 1 383         | -7.9             |
| Woodcontaining printing & writing | 390          | 463          | -15.8            | 1 533         | 1 881         | -18.5            |
| Tissue                            | 87           | 84           | 3.5              | 338           | 330           | 2.2              |
| Wrapping papers                   | 271          | 175          | 54.7             | 984           | 911           | 8.1              |
| Kraft paper                       | 264          | 169          | 56.0             | 956           | 885           | 8.0              |
| Folding boxboards                 | 597          | 541          | 10.2             | 2 376         | 2 469         | -3.8             |
| Case materials                    | 496          | 487          | 1.8              | 1 892         | 2 008         | -5.8             |
| Kraft liner                       | 370          | 378          | 2.2              | 1 414         | 1 505         | 6.1              |
| Others                            | 27           | 27           | 0.1              | 117           | 121           | -2.7             |
| <b>Total paper and board</b>      | <b>2 827</b> | <b>2 726</b> | <b>3.7</b>       | <b>10 919</b> | <b>11 662</b> | <b>-6.4</b>      |
| <b>Total deliveries</b>           | <b>2009</b>  | <b>2008</b>  | <b>Change in</b> | <b>2009</b>   | <b>2008</b>   | <b>Change in</b> |
| 1,000 tonnes                      | <b>Q4</b>    | <b>Q4</b>    | <b>%</b>         | <b>Acc</b>    | <b>Acc</b>    | <b>%</b>         |
| Newsprint                         | 664          | 713          | -6.8             | 2 422         | 2 590         | -6.5             |
| Woodfree printing & writing       | 318          | 326          | -2.4             | 1 290         | 1 413         | -8.7             |
| Woodcontaining printing & writing | 395          | 463          | -14.8            | 1 562         | 1 814         | -13.9            |
| Tissue                            | 78           | 77           | 2.2              | 314           | 310           | 1.3              |
| Wrapping papers                   | 251          | 177          | 42.2             | 945           | 916           | 3.1              |
| Kraft paper                       | 243          | 169          | 44.2             | 912           | 883           | 3.4              |
| Folding boxboards                 | 599          | 532          | 12.7             | 2 356         | 2 350         | 0.3              |
| Case materials                    | 469          | 432          | 8.7              | 1 898         | 1 987         | -4.5             |
| Kraft liner                       | 343          | 323          | 6.3              | 1 431         | 1 481         | -3.4             |
| Others                            | 27           | 24           | 12.8             | 121           | 116           | 4.4              |
| <b>Total paper and board</b>      | <b>2 802</b> | <b>2 743</b> | <b>2.2</b>       | <b>10 908</b> | <b>11 497</b> | <b>-5.1</b>      |
| <b>Exports</b>                    | <b>2009</b>  | <b>2008</b>  | <b>Change in</b> | <b>2009</b>   | <b>2008</b>   | <b>Change in</b> |
| 1,000 tonnes                      | <b>Q4</b>    | <b>Q4</b>    | <b>%</b>         | <b>Acc</b>    | <b>Acc</b>    | <b>%</b>         |
| Newsprint                         | 555          | 585          | -5.2             | 2 017         | 2 132         | -5.4             |
| Woodfree printing & writing       | 271          | 282          | -4.0             | 1 112         | 1 241         | -10.4            |
| Woodcontaining printing & writing | 377          | 439          | -14.2            | 1 489         | 1 716         | -13.2            |
| Tissue                            | 44           | 44           | 0.0              | 178           | 173           | 3.0              |
| Wrapping papers                   | 234          | 162          | 44.7             | 873           | 859           | 1.5              |
| Kraft paper                       | 227          | 155          | 47.0             | 843           | 828           | 1.8              |
| Folding boxboards                 | 553          | 480          | 15.0             | 2 162         | 2 142         | 0.9              |
| Case materials                    | 428          | 384          | 11.2             | 1 727         | 1 779         | -2.9             |
| Kraft liner                       | 321          | 300          | 6.8              | 1 333         | 1 381         | -3.5             |
| Others                            | 25           | 23           | 9.2              | 115           | 109           | 5.3              |
| <b>Total paper and board</b>      | <b>2 486</b> | <b>2 400</b> | <b>3.6</b>       | <b>9 674</b>  | <b>10 151</b> | <b>-4.7</b>      |
| <b>Domestic deliveries</b>        | <b>2009</b>  | <b>2008</b>  | <b>Change in</b> | <b>2009</b>   | <b>2008</b>   | <b>Change in</b> |
| 1,000 tonnes                      | <b>Q4</b>    | <b>Q4</b>    | <b>%</b>         | <b>Acc</b>    | <b>Acc</b>    | <b>%</b>         |
| Newsprint                         | 109          | 128          | -14.3            | 405           | 459           | -11.6            |
| Woodfree printing & writing       | 47           | 44           | 7.5              | 178           | 172           | 3.3              |
| Woodcontaining printing & writing | 18           | 24           | -25.0            | 72            | 98            | -26.5            |
| Tissue                            | 34           | 32           | 5.2              | 136           | 137           | 0.8              |
| Wrapping papers                   | 17           | 15           | 14.5             | 72            | 57            | 27.0             |
| Kraft paper                       | 16           | 14           | 14.1             | 70            | 55            | 27.4             |
| Folding boxboards                 | 47           | 52           | -9.2             | 194           | 208           | -6.7             |
| Case materials                    | 42           | 47           | -12.2            | 170           | 208           | -18.0            |
| Kraft liner                       | 22           | 22           | -0.3             | 98            | 101           | -2.1             |
| Others                            | 2            | 1            | 76.9             | 7             | 7             | -8.7             |
| <b>Total paper and board</b>      | <b>316</b>   | <b>343</b>   | <b>-7.8</b>      | <b>1 234</b>  | <b>1 346</b>  | <b>-8.3</b>      |

## Paper and Board

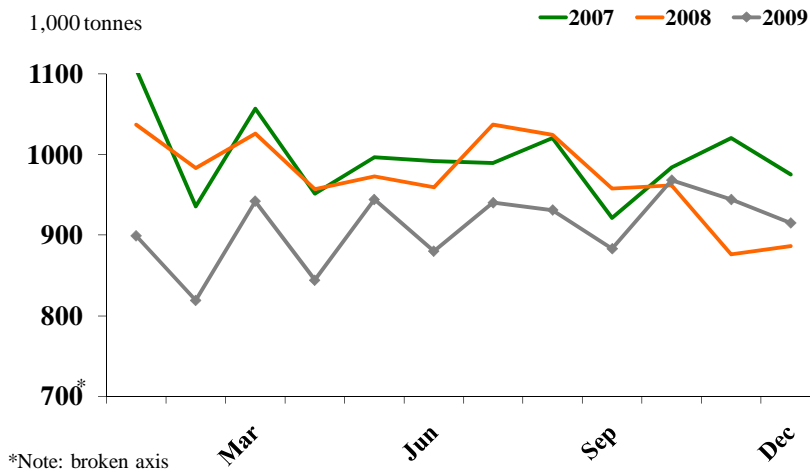
December 2009

| Deliveries by destination<br>1,000 tonnes | 2009<br>Q4   | 2008<br>Q4   | Change in<br>% | 2009<br>Acc   | 2008<br>Acc   | Change in<br>% |
|---|--------------|--------------|----------------|---------------|---------------|----------------|
| EU, excl. Sweden                          | 1 757        | 1 842        | -4.6           | 6 909         | 7 464         | -7.4           |
| Germany                                   | 500          | 503          | -0.5           | 1 940         | 2 017         | -3.8           |
| United Kingdom                            | 319          | 328          | -2.8           | 1 286         | 1 364         | -5.7           |
| Italy                                     | 156          | 152          | 2.5            | 628           | 624           | 0.5            |
| France                                    | 118          | 121          | -2.4           | 495           | 501           | -1.3           |
| Denmark                                   | 104          | 114          | -8.9           | 380           | 479           | -20.8          |
| Other Europe                              | 227          | 186          | 21.9           | 827           | 852           | -3.0           |
| North America                             | 23           | 27           | -16.1          | 96            | 118           | -18.7          |
| Latin America                             | 31           | 29           | 9.7            | 118           | 140           | -16.1          |
| Asia                                      | 341          | 238          | 43.3           | 1 342         | 1 186         | 13.2           |
| China                                     | 69           | 25           | 173.9          | 285           | 188           | 51.4           |
| Israel                                    | 25           | 29           | -14.6          | 83            | 108           | -22.7          |
| Taiwan                                    | 16           | 10           | 49.7           | 45            | 58            | -22.6          |
| Oceania                                   | 17           | 24           | -26.8          | 78            | 97            | -20.1          |
| Africa                                    | 90           | 55           | 63.5           | 305           | 295           | 3.6            |
| <b>Total exports</b>                      | <b>2 487</b> | <b>2 400</b> | <b>3.6</b>     | <b>9 674</b>  | <b>10 151</b> | <b>-4.7</b>    |
| Domestic                                  | 316          | 343          | -7.8           | 1 234         | 1 346         | -8.3           |
| <b>Total Deliveries</b>                   | <b>2 803</b> | <b>2 743</b> | <b>2.2</b>     | <b>10 908</b> | <b>11 497</b> | <b>-5.1</b>    |

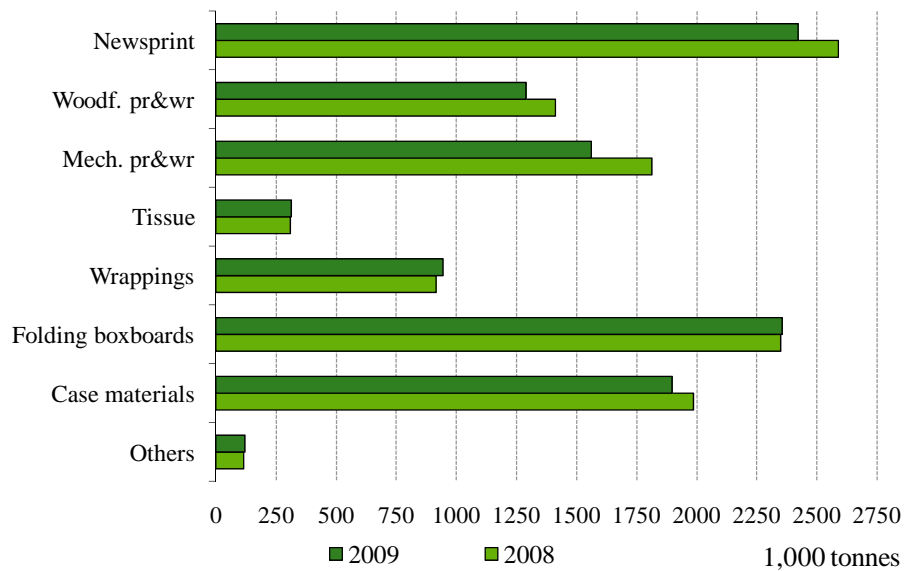
### Exports of Paper and Board



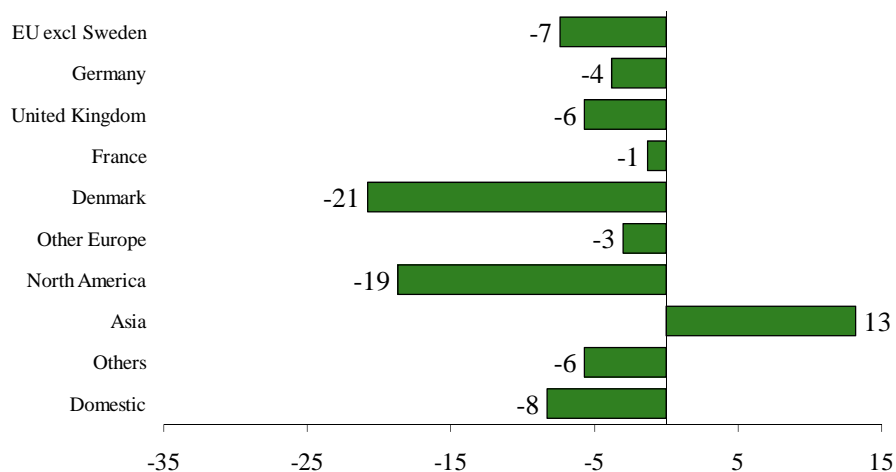
### Paper and Board production 2007-2009



### Paper deliveries by grade January – December



### Deliveries by destination - change in percent 09/08



### Production and exports of paper quarterly 2000 - 2009

